

HAIR PROFESSIONAL
VITaEL

hair color

PERMANENT COLORING CREAM

with DULCEMIN® & LIPOSYSTEM COMPLEX®



VEGAN
FRIENDLY

DERMATOLOGICALLY
TESTED

VITAEAL Hair Color

IMPROVED FORMULA WITH DULCEMIN® AND LIPOSYSTEM COMPLEX®

- **PATENT ACTIVE INGREDIENTS**
- **DERMATOLOGICALLY TESTED**
- **VEGAN FRIENDLY**



Plant Collagen



Plant Liposomes



+INTENSE

+BRILLIANT

+VIBRANT

NATURALI
Naturals



NATURALI INTENSI
Intense naturals



NATURALI FREDDI
Cold naturals



CENERE
Ash



CENERE INTENSI
Intense Ash

6.11



Rubio oscuro ceniza intenso
Intense ash dark blond
BIONDO SCURO CENERE INTENSO

7.11



Rubio ceniza intenso
Intense ash blond
BIONDO CENERE INTENSO

8.11



Rubio claro ceniza intenso
Intense ash light blond
BIONDO CHIARO CENERE INTENSO

9.11



Rubio castaño ceniza intenso
Intense ash very light blond
BIONDO CHIARISSIMO CENERE INTENSO

10.11



Rubio superclaro ceniza intenso
Intense ash lightest blond
BIONDO BISSIMO CENERE INTENSO

MATT
Matt

6.17



Matt dark blond
BIONDO SCURO MATT

7.17



Matt blond
BIONDO MATT

8.17



Matt light blond
BIONDO CHIARO MATT

DORATI
Goldens

4.3



Golden brown
CASTANO DORATO

5.3



Light golden brown
CASTANO CHIARO DORATO

6.3



Dark golden blond
BIONDO SCURO DORATO

7.3



Golden blond
BIONDO DORATO

8.3



Light golden blond
BIONDO CHIARO DORATO

8.33



Intense light golden blond
BIONDO CHIARO DORATO INTENSO

9.3



Very light golden blond
BIONDO CHIARISSIMO DORATO

RAMATI
Coppers

5.4



Light copper brown
CASTANO CHIARO RAME

6.4



Dark copper blond
BIONDO SCURO RAME

7.4



Copper blond
BIONDO RAME

7.44



Intense copper blond
BIONDO RAME INTENSO

7.46



Red copper blond
BIONDO RAME ROSSO

8.4



Light copper blond
BIONDO CHIARO RAME

8.44



Intense copper light blond
BIONDO CHIARO RAME INTENSO

IRISEE
Irisée

4.2



Intense brown
CASTANO IRISÉE

5.2



Light intense brown
CASTANO CHIARO IRISÉE

6.22



Intense malow
MALVA INTENSA

7.22



Intense irisée blond
BIONDO IRISÉE INTENSO

7.26



Red malow
MALVA ROSSA

ROSSI
Reds



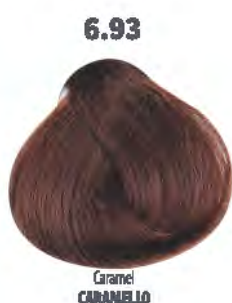
MARRONI ICE
Ice Chestnut



CIOCCOLATO
Chocolate



AMBRA
Amber



BIONDI FUSION
Fusion blonds



7.13

Bone
BRONZO



8.13

Hazel beige
RESAL BEIGE



8.31

Golden sand
SABBIA DORATA



9.13

Ginger
ZENZO



10.13

Champagne
QUANTIC

SABBIA
Sand



6.7

Dark sand blond
BIONDO SCURO SABBIA



7.7

Sand blond
BIONDO SABBIA



8.7

Light sand blond
BIONDO CHIARO SABBIA



9.7

Very light sand blond
BIONDO CHIARISSIMO SABBIA



10.7

Lightest sand blond
BIONDISSIMO SABBIA

PERLA
Pearl



7.12

Pearl blond
BIONDO PERLA



8.12

Light pearl blond
BIONDO CHIARO PERLA



9.12

Very light pearl blond
BIONDO CHIARISSIMO PERLA



9.23

Blauwoud
Golden hair: very light pearl blond
BIONDO CHIARISSIMO PERLA
INSELE INBLAUW



10.23

Blauwoud
Golden hair: lightest pearl blond
BIONDISSIMO PERLA INSELE INBLAUW

SUPER SCHIARENTI
Superlighteners



900

Natural superlightener
SUPERSCHIARENTE NATURALE



901

Ash superlightener
SUPERSCHIARENTE CENIALE



912

Silver superlightener
SUPERSCHIARENTE ARGENTO



913

Beige superlightener
SUPERSCHIARENTE BEIGE



1000

Bleaching powder
RINZIGLIANTE IN SCHIARITIVA

ULTRA SUPER SCHIARENTI
Ultra superlighteners



900 S

Ultra natural superlightener
ULTRA SUPERSCHIARENTE NATURALE



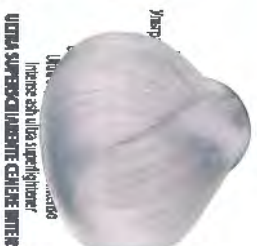
901 S

Ultra ash superlightener
ULTRA SUPERSCHIARENTE CENIALE



902 S

Ultra beige superlightener
ULTRA SUPERSCHIARENTE BEIGE



911 S

Ultra intense ash superlightener
ULTRA SUPERSCHIARENTE CENIALE INTENSO



912 S

Silver ultra superlightener
ULTRA SUPERSCHIARENTE ARGENTO

TONALIZZATORI
Toners



Lavender
LAMANDA



Silver
ARGENTO

CREATIVE COLOR



Bare
FALSA



Amaranth
AMARANTO

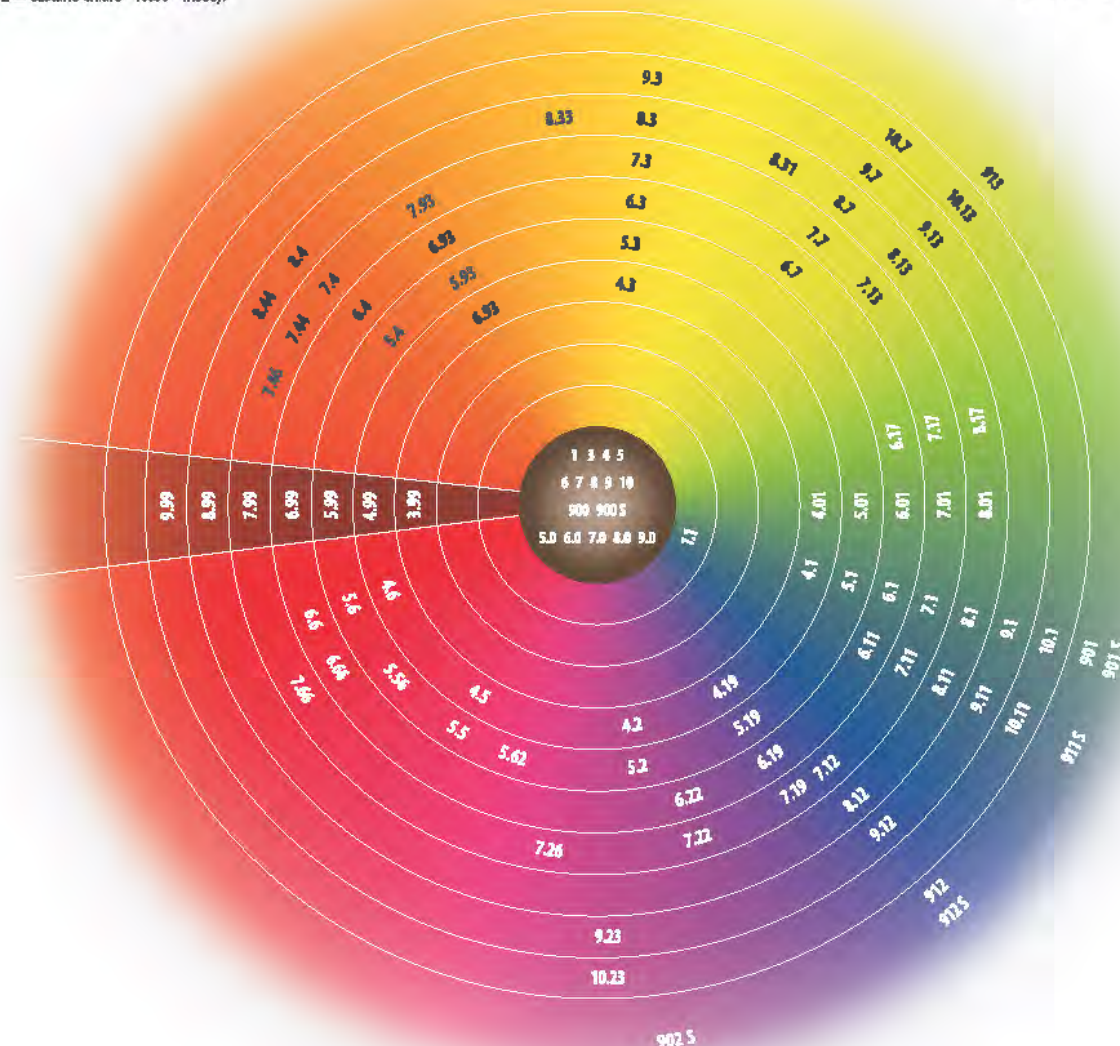


IL SISTEMA DI NUMERAZIONE

Il primo numero indica il livello o altezza di tono,
il secondo il riflesso primario
ed il terzo il riflesso secondario
(esempio 5.62 = castano chiaro - rosso - irisée).

THE CODE SYSTEM

The first number denotes the colour level,
the second indicates the primary shade
and the third the secondary shade
(i.e. 5.62 = light brown - red - irisée).



VitalFarco_{srl}

Via Canova 8/10 - 20094 Corsico (MI) - Italy
tel +39 02 36526956 - Fax +39 02 36528640
e-mail info@vitalfarco.com - www.vitalfarco.com

